



If you are reading my message, you are probably sitting in your seat at the Brookfield Theatre for the Arts waiting for the start of our first major fundraising effort — *Love Letters*. We are so grateful to our performers Gwen Arment and Steve Belida, both of whom have worked on Broadway for many years as actors and producers, and who call Brookfield their home on the weekends. You may even have seen their most recent Broadway shows, *Come from Away* and *The Prom*.

We also want to thank our sponsors, who have made this production possible through their ads and donated services. Please support these fine businesses and tell your friends to do so too. We partnered with Brookfield Theatre who have helped us make this production a special one. Thanks especially to Lou Okell for her guidance and suggestions.

The Brookfield Library Foundation is a 501(c)(3) charitable organization composed of Brookfield residents, and its sole purpose is to raise funds for a new library in Brookfield.

Please visit our website
www.BrookfieldLibraryFoundation.org
for information about future projects. We also have facts and figures about why we need a library that truly serves all the people of Brookfield.

Many thanks for supporting our first fundraising effort,
Bob Belden, President
The Brookfield Library Foundation

LOVE LETTERS

by A.R. GURNEY

starring GWEN ARMENT & STEVE BELIDA

TO BENEFIT

The Brookfield Library Foundation

**Please join us for a toast
after the performance. Cheers!**

—The Quinn's

Real generosity towards the future lies in giving all to the present."
—Albert Camus, *Notebooks* 1935-1942

**THE VIDEOTAPING OR MAKING OF ELECTRONIC OR OTHER AUDIO AND/OR
VISUAL RECORDINGS OF THIS PRODUCTION OR DISTRIBUTING RECORDINGS
ON ANY MEDIUM, INCLUDING THE INTERNET, IS STRICTLY PROHIBITED.**

LOVE LETTERS was presented at The Long Wharf Theatre,
M. Edgar Rosenblum, Executive Director;
Arvin Brown, Artistic Director.

LOVE LETTERS is presented by special arrangement with Dramatists Play Service, Inc., New York.



Gwen Arment & Steve Belida appear courtesy of Actors' Equity Association.

EMERGENCY FIRE NOTICE

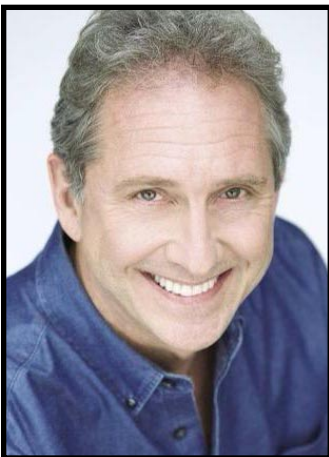
Please observe the **EXIT** sign nearest to the seat which you occupy. It is the shortest route to the exterior of the building. In the unlikely event of an emergency, theatre personnel will be available to assist your orderly departure.

BIOGRAPHIES



Gwen (Linda) Arment first met her husband, Steve Belida, while performing together on tour in *THE BEST LITTLE WHOREHOUSE IN TEXAS* starring Barbara Eden (*I Dream Of Jeanie*). Gwen had the great privilege of performing for many years on Broadway, off-Broadway, on tour, in regional theaters, and on TV with many fine artists such as Bob Hope, Eva Gabor, Tammy Grimes, Howard Keel, Carol Lawrence, Tony Bennett, Duke Ellington, Count Basie, Dionne Warwick.

One of her favorite experiences was dancing Bob Fosse's choreography as Lola in *DAMN YANKEES* and being coached by the original Lola, Ms Gwen Verdon. In addition to performing, Gwen has been a teacher, director, choreographer and producer. She was the artistic director for two musical theater development companies in NYC which gave the initial staged readings for two Broadway shows, *NEXT TO NORMAL* and *IT SHOULDA BEEN YOU*. She has also been an investor and co producer on various Broadway shows including *COME FROM AWAY*, *THE PROM* and the upcoming *COMPANY*. Education: Indiana University School of Music (BME) and Hunter College in Manhattan (MA).



Steve Belida has been seen on both Broadway and in Broadway National Tours such as *HANS CHRISTIAN ANDERSEN*, *JOSEPH & THE AMAZING TECHNICOLOR DREAMCOAT* and *THE BEST LITTLE WHOREHOUSE IN TEXAS*. Steve met his wife, Gwen, while performing with her on tour in *THE BEST LITTLE WHOREHOUSE IN TEXAS*. They also performed together in *I DO! I DO!* as Agnes and Michael, and in *DAMN YANKEES*, playing the leads Lola and Joe. Gwen Verdon, the original Lola, supervised that production. Steve

was recently seen in the Off-Broadway revival of the musical *BABY!* in the role of Alan, which was directed by Gwen. You may have seen Steve in a commercial or print ad.